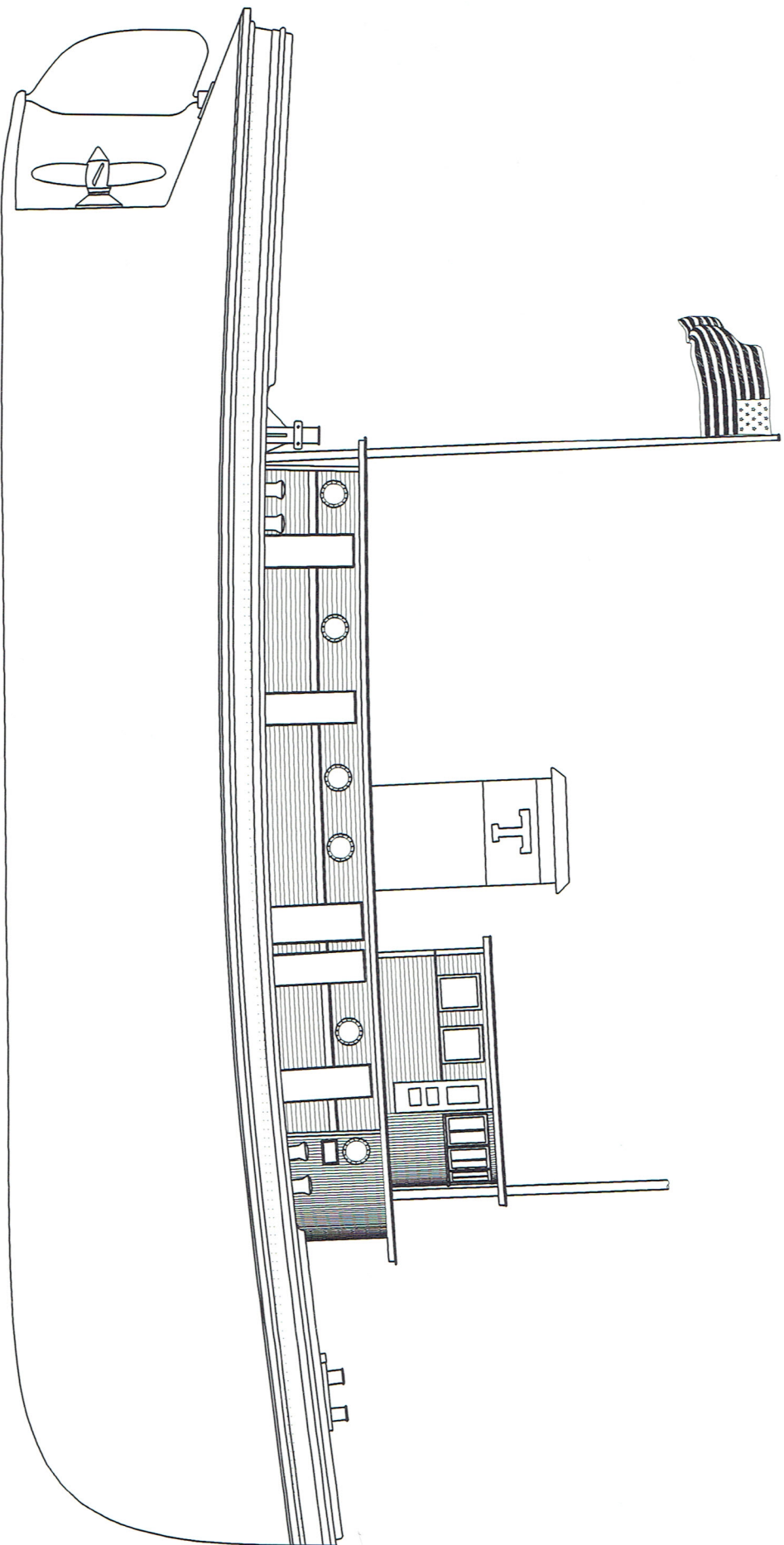
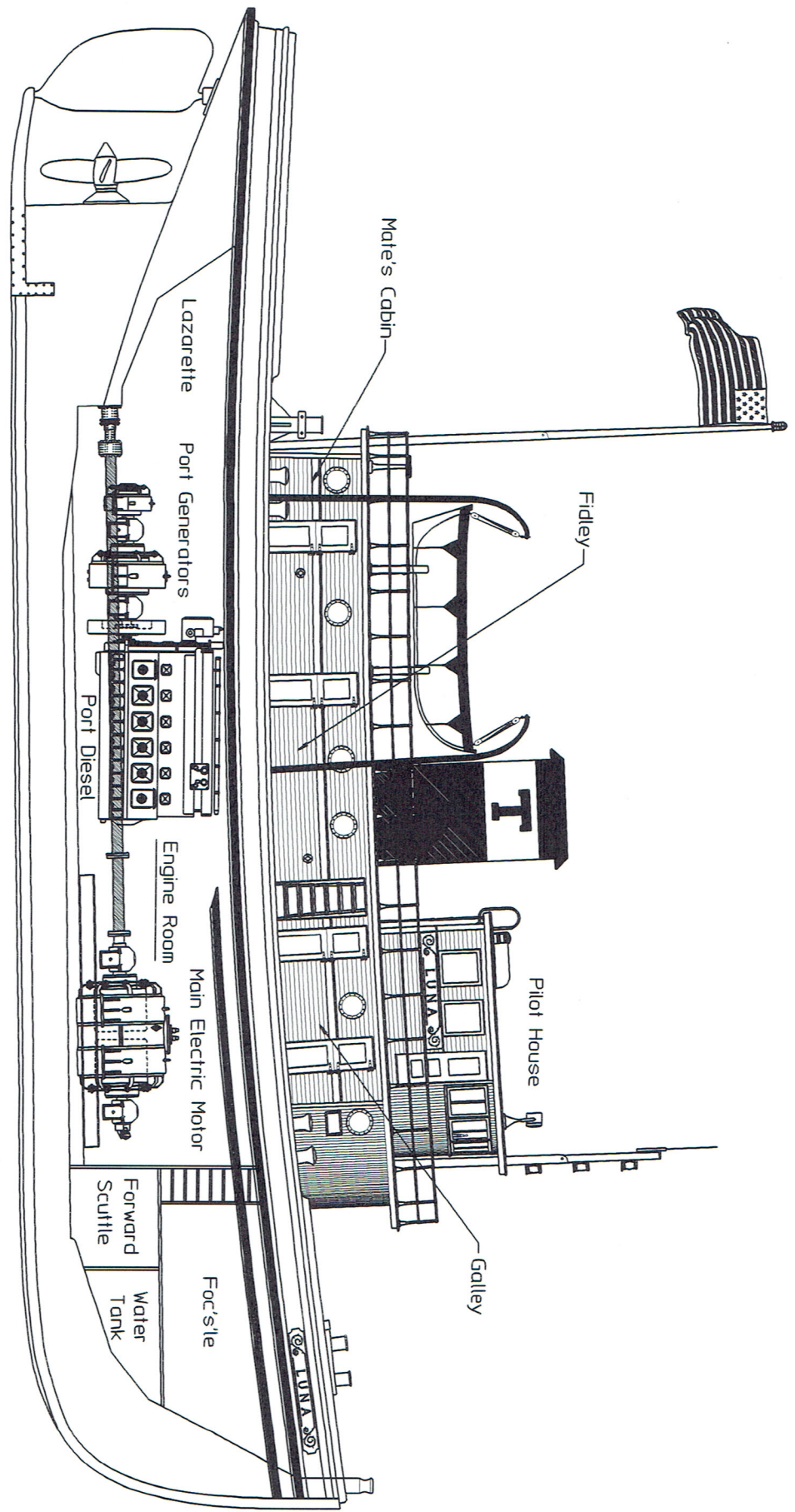


I'M A LUNNA--TIC



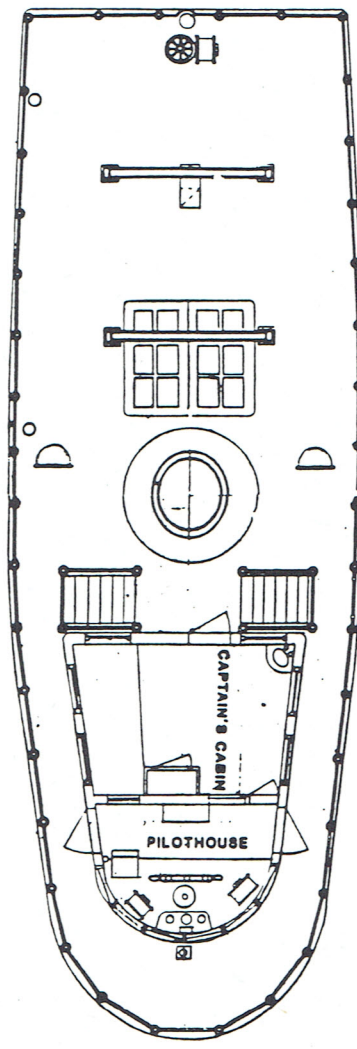
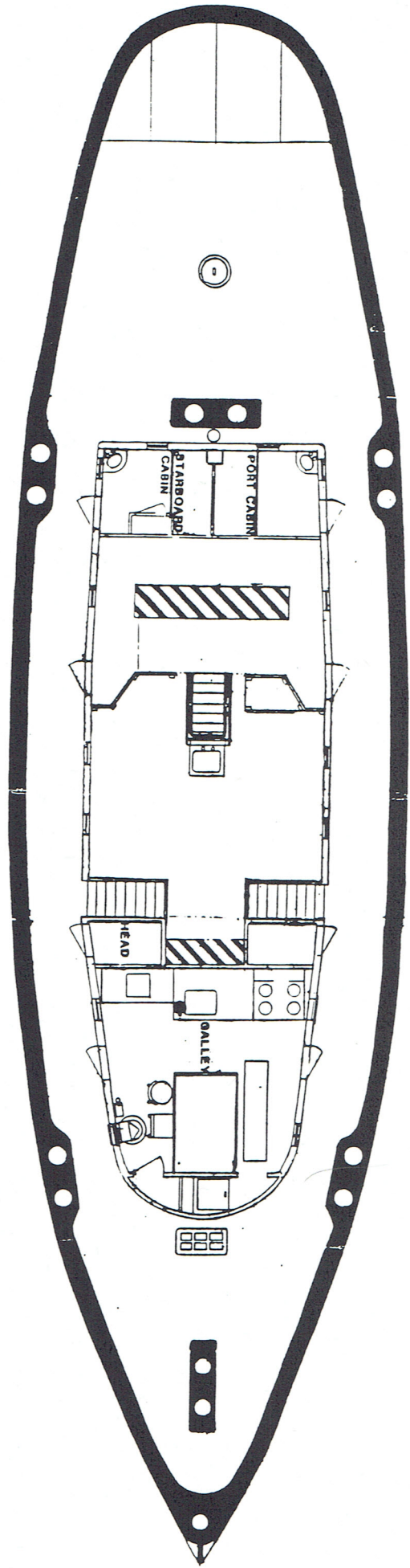
LUNNA Preservation Society

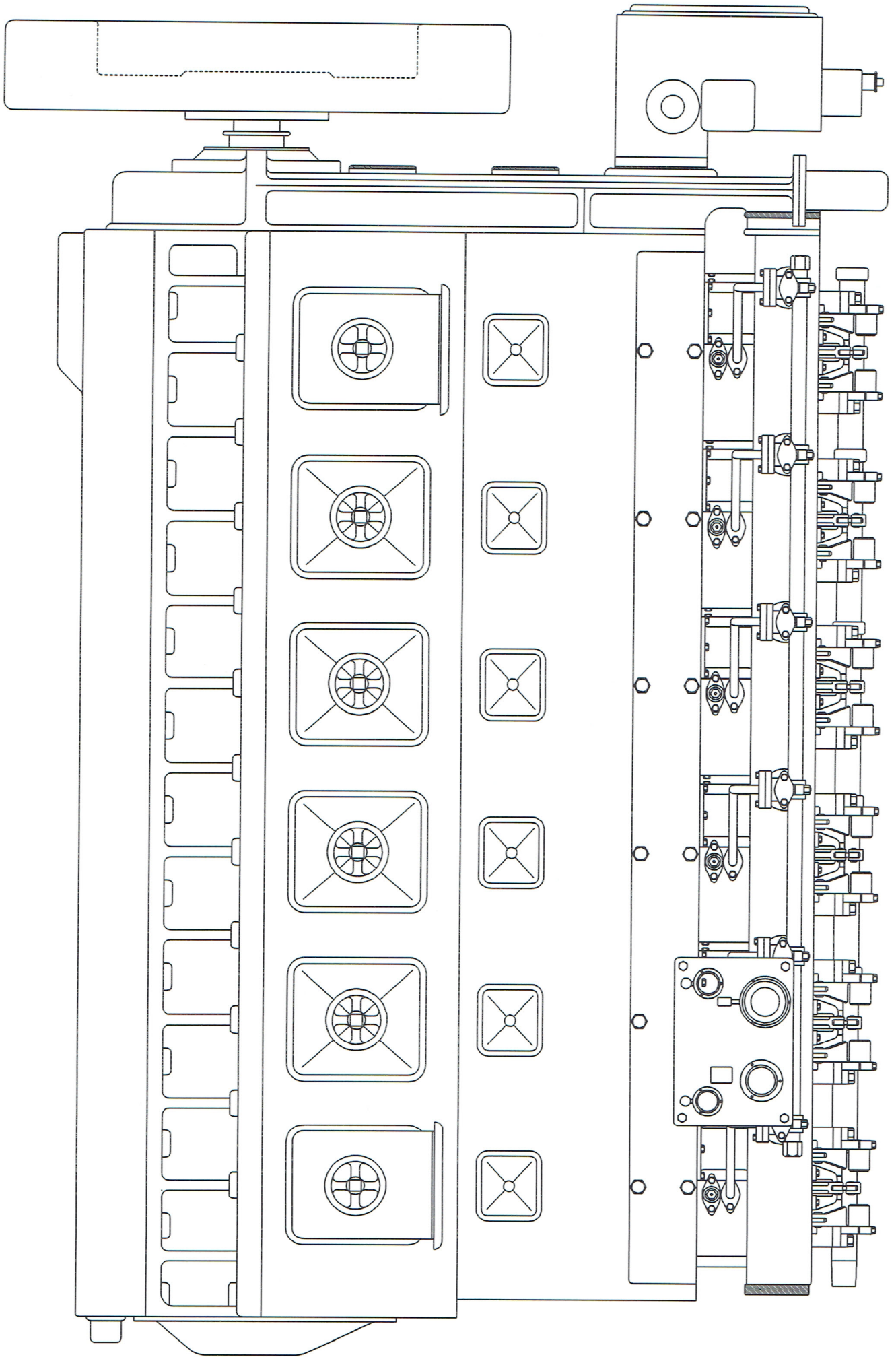


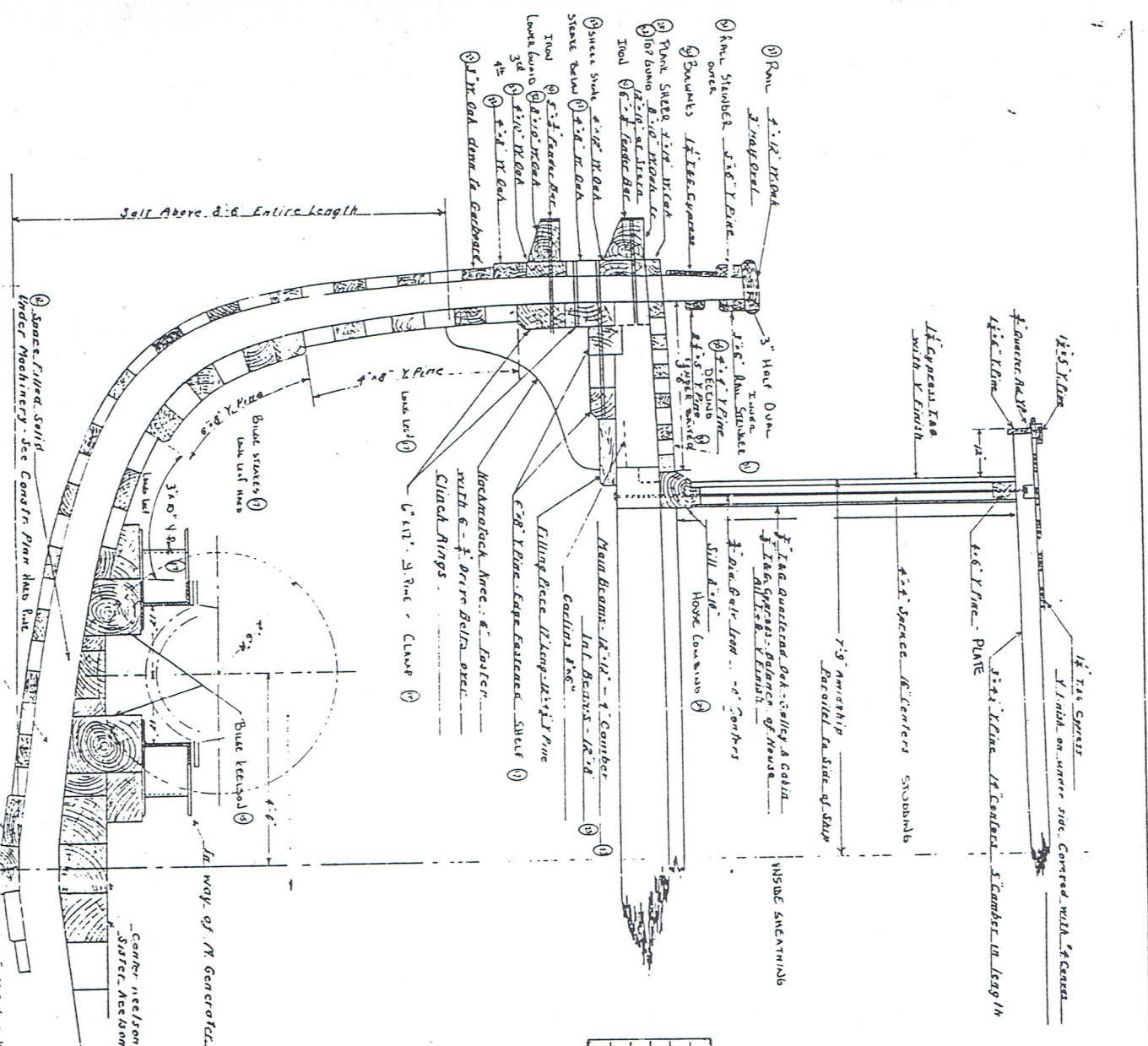
LUNA

L.O.A. 97.3 Feet
 Beam 24.8 Feet
 Engines Diesel-Electric

Displacement 325 Tons
 Draft 13.0 Feet
 Horsepower 650







Principal Dimensions	
length over all	36'-0"
length - free side - from aft side buttock	
cast	24'-0"
freedite moulded	13'-6"
depth moulded	

36' Diesel-Electric Tug
 Midship Section
 3'-1 FT.

